



Rocktab L210/U210/U210 Pro Accessories catalog



We empower heroes.

www.werocktools.com



Office docking station

Extension to a fully-fledged office workstation

- » Charge the tablet and expand it into a complete workstation at the same time
- » Numerous interfaces for external devices
- » Seamless integration for smooth functionality
- » Maximizes mobility and flexibility

Technical data

Typ	Office Docking Station
Color	Black
Interfaces	Audio input and output, 2 X USB 3.0, Gigabit LAN, HDMI, VGA, DisplayPort, 2 x RS232

Order numbers

Item number	Description
ACC-U210P-DKN1	Office docking station for Rocktab U210 Pro
ACC-U210-DKN1	Office docking station for Rocktab U210
ACC-L210-DKN1	Office docking station for Rocktab L210



Vehicle mount

Protecting the tablet while driving

- » Ideal readability
- » Securely protected and can be recharged at the same time
- » Additional interfaces for connecting further peripherals
- » AMPS holder for flexible mounting

Physical characteristics

Typ	Vehicle mount
Color	Black
Interfaces	2 X RS232, LAN Port, 2 X USB Port

Order numbers

Item number	Description
ACC-U210P-DKN2	Vehicle mount for Rocktab U210 Pro
ACC-U210-DKN2	Vehicle mount for Rocktab U210
ACC-L210-DKN2	Vehicle mount for Rocktab L210

Battery charging station

Charges up to 4 batteries simultaneously



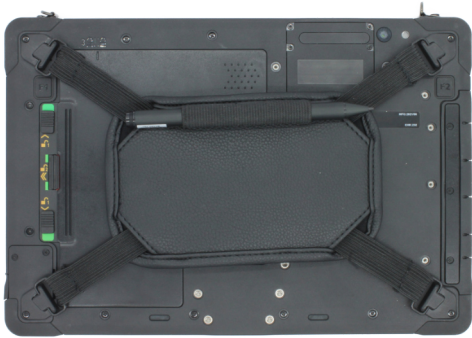
- » Ideal for multi-shift operation or intensive use of the tablets
- » Fast charging speed with charging indicator
- » All batteries can be placed in a charging station, so no additional sockets are required

Technical data

Typ	Battery charging station
Charging	3 hours

Order numbers

Item number	Description
ACC-U210P-DKN3	Battery charging station for Rocktab U210 Pro
ACC-RT-DKN3	Battery charging station for Rocktab U210
ACC-L210-DKN3	Battery charging station for Rocktab L210



Hand strap

Ideal for intensive use of the tablet

- » Practical hand strap for tablets
- » Increases comfort
- » Easy operation of the tablet by wearing the hand strap
- » Touch pen holder included

Compatibility

L210	U210	U210 Pro
•	•	•

Technical data

Typ	Hand strap
Color	Black
Assembly	Attachment to the corners of the tablet

Order numbers

Artikelnummer	Description
ACC-U210-HAN1	Hand strap for the Rocktab U210, U210 Pro and L210

Carrying handle

Ideal for easy transportation of the tablet

- » Simple attachment
- » Easy transportation of the tablet from place to place



Compatibility

L210	U210	U210 Pro
•	•	•

Technical data

Typ	Carrying handle
Color	Black

Order numbers

Item number	Description
ACC-RT-HAN3	Carrying handle for Rocktab U210, Rocktab U210 Pro and Rocktab L210



Rocktab kick stand

for flexible positioning of the tablet

- » Quick and easy attachment or removal
- » Convenient positioning of the tablet at different angles
- » Can also be used as a carrying handle
- » Robust and durable
- » Base compatible with Quickaccess mount

Technical data

Typ	Rocktab Kick stand
Color	Black
Assembly	Screw on the base plate and add or remove the stand as required
Compatibility	Quickaccess bracket

Order numbers

Item number	Description
ACC-RT-MNT9	Rocktab kick stand for U210 Pro
ACC-RT-MNT6	Rocktab kickstand for U210
ACC-RT-MNT8	Rocktab kickstand for L210



Shoulder strap

Ideal for easy transportation of the tablet

- » Simply strap your rugged tablet around your shoulder
- » Easy transportation of the tablet from place to place

Order numbers

Item number	Description
ACC-L110-HAN2	Shoulder strap

Compatibility

L210	U210	U210 Pro
•	•	•

Active digitizer stylus

Simple and precise touch input

- » Proactive, precise and simple
- » No long, noticeable delays
- » Pixel-accurate precision
- » Tilt and pressure detection
- » Exact recording of documents, drawings, notes, etc.



Compatibility

L210	U210	U210 Pro
•	•	•

Technical data

Typ	Active digitizer stylus
Useful life	138 hours
Battery	AAAA
Tilt detection	Yes

Order numbers

Item number	Description
ACC-RT-STY5	Active digitizer stylus

Universal active stylus

for all capacitive touchscreens

- » Precise and fast typing, drawing or writing, thanks to 2mm thin tip
- » Robust construction
- » Automatically switches off when not in use for long periods of time
- » Sturdy retaining clip



Compatibility

L210	U210	U210 Pro
•	•	•

Technical data

Typ	Universal active stylus
Color	Black
Weight	24g
Battery	1 X AAA

Order numbers

Item number	Description
ACC-RT-STY4	Universal active stylus



Universal stylus

For all capacitive touchscreens

- » Completely without plastic parts
- » Also works in rain or snow
- » Made of stainless steel and brass

Compatibility		
L210	U210	U210 Pro
•	•	•

Technical data

Typ	Universal stylus
Material	Stainless steel and brass
Color	Black
Length	Approx. 13 cm
Compatibility	With all capacitive touchscreen devices

Order numbers

Item number	Description
ACC-RT-STY2	Universal stylus
ACC-RT-STC	Matching strap



CLK1 Washable ergonomic mouse

For the highest hygiene requirements

- » Easy cleaning
- » Protection class IP68: high water resistance
- » Mechanically guided mouse buttons
- » Suitable for rinsing bath and immersion disinfection

Compatibility		
L210	U210	U210 Pro
•	•	•

Technical data	
Typ	CLK1 Washable ergonomic mouse
Temperature range	Storage -20° to +60°C; operation 0° to +50°C
Weight	ca. 103 g
Power supply	5 V +/-10% at the USB port
Interface	USB 1.1
Protection class / water resistance	IP68

Order numbers	
Item number	Description
ACC-GEN-CLK1	CLK1 Washable ergonomic PC mouse



CLK3 Medical-hygienic radio mouse

with scroll wheel sensor

- » Ideal for the highest hygiene requirements
- » Especially for use in hospitals, doctors' surgeries, microbiological laboratories, as well as in the pharmaceutical, cosmetics and food industries
- » Protection class IP68: fully sealed
- » Hygienically sensitive environments

Compatibility		
L210	U210	U210 Pro
•	•	•

Technical data	
Typ	CLK3 Medical-Hygienic wireless mouse with scroll wheel sensor
Compatibility	All operating systems that support a standard USB mouse
Chemical resistance	Cleaning and surface disinfection according to DGHM/VAH guidelines
Power supply	3V via 2 AAA batteries
Weight	Ca. 88 g
Authorization	CE, RoHS, EN60601-1-2:2015 (IEC 4th edition)

Order numbers	
Item number	Description
ACC-GEN-CLK3	CLK3 Medical-Hygienic wireless mouse

KBD2 Waterproof compact keyboard

For the highest hygiene requirements



- » Particularly suitable for use in hospitals, doctors' surgeries and microbiological laboratories, as well as in industrial and administrative applications
- » Cleaning and disinfection in accordance with DGHM/VAH guidelines
- » IP68 protection class for immersion cleaning and automated reprocessing
- » Illuminated keypad for use in dark environments
- » Wired

Compatibility

L210	U210	U210 Pro
•	•	•

Technical data

Typ	KBD2 Waterproof compact keyboard
Material	Silicone key membrane with flat key profile and closed, gap-free surface
Protection class	IP68 for immersion cleaning and mechanical reprocessing
Assembly	USB connection, incl. swivel mounting bracket
Cleaning and disinfection	according to DGHM/VAH guidelines
Layout	Standard: German QWERTZ layout, other layouts on request

Order numbers

Item number	Description
ACC-GEN-KBD2-DE	KBD2 Waterproof compact keyboard

KBD6 Ultra-flat Bluetooth keyboard

Universal, wireless solution



- » Modern Bluetooth 4.0 technology
- » Can be connected to up to 3 devices simultaneously
- » Works with virtually all operating systems (Windows, Android, iOS)

Compatibility

L210	U210	U210 Pro
•	•	•

Technical data

Typ	KBD6 Ultra-flat Bluetooth keyboard
Connection modes	Bluetooth 4.0, Bluetooth 3.0
Operating distance	Up to 10 m range and 360-degree coverage
Compatibility	Windows XP/Vista/7/8/10, macOS, iOS, Android, Chrome OS
Battery	Lithium-ion, runtime up to 3 months
Nano USB receiver	Plug & Play

Order numbers

Item number	Description
ACC-GEN-KBD6-DE	KBD6 Ultra-flat Bluetooth keyboard

KBD9 Industrial keyboard

Illuminated silicone keypad for industry



- » IP65-certified: protection against dust, water jets and liquids
- » Cleaning with disinfectants or under running water
- » Durable and reliable, thanks to PU coating
- » Easy to operate, even with gloves

Compatibility

L210	U210	U210 Pro
•	•	•

Technical data

Typ	KBD9 Industrial keyboard
Temperature ranges	Operating temperature -10°C to +50°C; storage temperature -40°C to +60°C
Weight	1200g without packaging
PC connection	USB interface (< 500 mA including lighting)
Key layout	German or international layout; 18 mm key grid
Key functions	Programmable with WinProgrammer software

Order numbers

Item number	Description
ACC-GEN-KBD9-DE	KBD9 Industrial keyboard



Compatibility

L210	U210	U210 Pro
•	•	•

Anti-reflective "bulletproof glass" screen protector

Reduction of reflections

- » Hybrid glass: as hard as glass, as flexible as film
- » Extremely resistant
- » Anti-glare coating
- » Available for all WEROCK products

Technical data

Typ	Anti-reflective "bulletproof glass" screen protector
Material	Glass and special polymer

Order numbers

Item number	Description
ACC-U210P-PRT2	Anti-reflective "bulletproof glass" screen protector for Rocktab U210 Pro
ACC-U210-PRT2	Anti-reflective "bulletproof glass" screen protector for Rocktab U210
ACC-L210-PRT2	Anti-reflective "bulletproof glass" screen protector for Rocktab L210



Compatibility

L210	U210	U210 Pro
•	•	•

Anti-reflective screen protector

Protects and reduces reflections

- » Extremely elastic: protection against falls and scratch-resistant
- » Resistant to many types of acids, alkalis, disinfectants and oils
- » Temperature-resistant up to 130 degrees

Technical data

Typ	Anti-reflective screen protector
Strength	With 0.13 mm
Temperature range	Up to 130°
Resistance	Against many acids, alkalis, disinfectants and oils

Order numbers

Item number	Description
ACC-U210P-PRT1	Anti-reflective screen protector for Rocktab U210 Pro
ACC-U210-PRT1	Anti-reflective screen protector for Rocktab U210
ACC-L210-PRT1	Anti-reflective screen protector for Rocktab L210

Scanner glass protective film

Protects against scratches

- » Extends the service life
- » Protects against scratches
- » Available for all WEROCK products



Compatibility		
L210	U210	U210 Pro
•	•	•

Technical data

Typ	Scanner glass protective film
-----	-------------------------------

Order numbers

Item number	Description
ACC-U210P-PRT4	Scanner glass protective film for Rocktab U210 Pro
ACC-U210-PRT4	Scanner glass protective film for Rocktab U210
ACC-L210-PRT4	Scanner glass protective film for Rocktab L210



Lockable, passive tablet holder

Protects against quick removal by unauthorized persons

- » Adjustable back plate with tension spring and locking mechanism
- » Easy insertion or removal of the tablet
- » Access to all connection sockets

Compatibility		
L210	U210	U210 Pro
	•	•

Technical data	
Typ	Lockable, passive tablet holder
Height	min. 23.50 cm to max. 28.82 cm
Width	min. 16.64 cm to max. 18.87 cm
Depth	from 0.76 cm to max. 2.22 cm
Mounting bracket	C-ball base plate

Order numbers	
Item number	Description
ACC-RT-MNT4	Lockable, passive tablet holder



AMPS double-jointed bracket

Available with 90 mm, 140 mm, 230 mm

- » Set consisting of two C-ball base plates and one C-ball connecting arm
- » High compatibility, thanks to the universal AMPS hole pattern
- » Ideal addition to the vehicle mount or vehicle docking station

Compatibility		
L210	U210	U210 Pro
	•	•

Technical data	
Typ	AMPS double-jointed bracket
Universal AMPS hole pattern	Yes
Set	1 X C-ball connecting arm, 2 X C-ball base plate

Order numbers	
Item number	Description
ACC-GEN-R048	AMPS double joint bracket 90 mm
ACC-GEN-R049	AMPS double joint bracket 140 mm
ACC-GEN-R050	AMPS double-jointed bracket 230 mm



C-ball base plate

Basis for many fastening solutions

- » Round base plate with AMPS hole pattern
- » 1.5 inch diameter
- » Ideally suited for mounting on smooth, vertical or horizontal surfaces

Technical data

Typ	C-ball base plate
Diameter	1.5 inch
Assembly	Screw the base plate to any desired location

Compatibility

L210	U210	U210 Pro
	•	•

Order numbers

Item number	Description
ACC-GEN-R025	C-ball base plate



C-ball retaining clip

Available in three sizes

- » Ideal for quick, tool-free attachment to round, flat or other pipes or rods
- » High-strength composite material with rust-resistant steel elements
- » Rubber coating on the inside of the clamp ensures a stable fit and protects the surface
- » Simple and quick fastening of the clip

Technical data

Typ	C-ball retaining clip
Material	High-strength composite material with rust-resistant steel elements, rubber coating on the inside
Size	Large: Ø min: 25.4 mm, Ø max: 57.15 mm Medium: Ø min: 25.4 mm, Ø max: 47.63 mm Small: Ø min: 15.88 mm, Ø max: 38.1 mm

Compatibility

L210	U210	U210 Pro
	•	•

Order numbers

Item number	Description
ACC-GEN-R027	C-ball retaining clip, large
ACC-GEN-R028	C-ball retaining clip, medium
ACC-GEN-R026	C-ball retaining clip, small



Compatibility

L210	U210	U210 Pro
	•	•

C-ball profile screw clamp

Available in seven sizes

- » Ideal for attaching to profiles
- » Has a C-ball that is at right angles to the plate
- » With corresponding C-ball connecting arm, it allows many fastening solutions

Technical data

Typ	C-ball profile screw clamp
Assembly	Both plates are screwed tight using the enclosed bolts and nuts
Dimensions (width X depth)	Size 1: 38.1 mm X 40.0 mm, Size 2: 43.2 mm X 40.0 mm, Size 3: 50.8 mm X 40.0 mm, Size 4: 63.6 mm X 40.0 mm, Size 5: 76.2 mm X 40.0 mm, Size 6: 101.6 mm X 40.0 mm, Size 7: 127 mm X 40.0 mm

Order numbers

Item number	Description
ACC-GEN-R034	C-ball profile screw clamp, size 1
ACC-GEN-R035	C-ball profile screw clamp, size 2
ACC-GEN-R036	C-ball profile screw clamp, size 3
ACC-GEN-R037	C-ball profile screw clamp, size 4
ACC-GEN-R038	C-ball profile screw clamp, size 5
ACC-GEN-R039	C-ball profile screw clamp, size 6
ACC-GEN-R040	C-ball profile screw clamp, size 7



Compatibility

L210	U210	U210 Pro
	•	•

C-ball pipe clamp

Cheaper alternative to the C-ball pipe clamp

- » Zinc-coated pipe clamp incl. splash protection with a C-ball
- » Numerous fastening options
- » Attachment to pipes from 1.27 to 5.08 cm in diameter

Technical data

Typ	C-ball pipe clamp
Material	Zinc-coated, rubber band
Dimensions	1.27 to 5.08 cm in diameter

Order numbers

Item number	Description
ACC-GEN-R041	C-ball pipe clamp



Compatibility

L210	U210	U210 Pro
	•	•

C-ball connecting arm

Available in three sizes

- » Connecting arm is mounted between two C-balls
- » Fixed with twist lock for desired positioning

Technical data

Typ	C-ball connecting arm
Assembly	Connecting arm is mounted between two C-balls and fixed in place with a twist lock
Compatibility	Connecting arm for two C-balls
Dimensions	Small: 90 mm Medium: 140 mm Large: 230 mm

Order numbers

Item number	Description
ACC-GEN-R044	C-ball connecting arm, 90 mm
ACC-GEN-R045	C-ball connecting arm, 140 mm
ACC-GEN-R046	C-ball connecting arm, 230 mm



Compatibility

L210	U210	U210 Pro
	•	•

C-ball VESA plate

Available in two sizes

- » Consisting of a C-ball at right angles to the square base plate
- » Pre-drilled holes at the corners

Technical data

Typ	C-ball VESA plate
Set	VESA plate with C-ball (1.5 inch)
Montage	Screw tight using the pre-drilled holes in the corners
Dimensions	75 X 75 mm 100 X 100 mm

Order numbers

Item number	Description
ACC-GEN-R042	C-ball VESA plate, 75 X 75 mm
ACC-GEN-R043	C-ball VESA plate 100 X 100 mm

Quick Access bracket

for regular removal from the holder



- » Simple holder for tablets
- » Quick release for regular removal from the holder
- » Supplied without ball joint mount
- » Mounting bracket: C-ball base plate / AMPS

Technical data

Typ	Quick Access bracket
Assembly	C-ball base plate / AMPS
Special features	Supplied without ball joint bracket

Order numbers

Item number	Description
ACC-RT-MNT7	Quickaccess mount for Rocktab L210
ACC-RT-MNT1	Quickaccess mount for Rocktab U210 and Rocktab U210 Pro



Universal tablet wall mount

for easy removal of the tablet

- » Optimum positioning thanks to various docking points for round AMPS base plate
- » Easily accessible handles on the back make it easy to remove the tablets
- » Full access to all tablet connections

Technical data

Typ	Universal tablet wall mount
Dimensions	Minimum tablet dimensions (H x W x D): 184.15 mm x 200 mm x 10 mm Maximum tablet dimensions (H x W x D): 222.25 mm x 260.35 mm / unlimited (without additional brackets) x 22.23 mm
Compatibility	For 10-12 inch tablets
Recording	AMPS
Material	Powder-coated aluminum, stainless steel components, high-strength composite material, rubber fingers

Compatibility

L210	U210	U210 Pro
	•	•

Order numbers

Item number	Description
ACC-GEN-R053	Universal tablet wall mount



Micro SD card

Available with 512 GB, 256 GB, 128 GB, 64 GB

- » Cost-effective expansion with additional memory
- » High read and write speed of up to 100 MB/s

Technical data

Typ	Micro SD card
Read and write speed	up to 100 MB/s or 90 MB/s

Order numbers

Item number	Description
ACC-GEN-MSDXC64	Micro SD card with 64 GB
ACC-GEN-MSDXC128	Micro SD card with 128 GB
ACC-GEN-MSDXC256	Micro SD card with 256 GB
ACC-GEN-MSDXC512	Micro SD card with 512 GB

Compatibility

L210	U210	U210 Pro
•	•	•



Premium Care

Extended protection

For extended protection, PremiumCare gives you additional, extended services, such as free configuration support and support for self-inflicted software problems within 90 days. Service tickets are processed with the highest priority so that you are up and running again as quickly as possible. If a hardware repair takes longer than 7 working days, you will receive an equivalent replacement device to tide you over.

Order numbers	
Item number	Description
SRV-L210-P3NX	Rocktab L210 Premium Care Support 3 years
SRV-L210-P5NX	Rocktab L210 Premium Care Support 5 years
SRV-U210-P3NX	Rocktab U210 Premium Care Support 3 years
SRV-U210P-P3NX	Rocktab U210 Pro Premium Care Support 3 years



Warranty Plus

Fully-Rugged-Garantie

With Warranty Plus, your product is fully protected. It is your fully comprehensive cover that also protects you against material damage caused by normal use, wear and tear and accidents. Even theft and fire damage are covered by our warranty*. In the event of loss or total loss of the device, a complete replacement is possible.

* = Additional payment necessary

Order numbers	
Item number	Description
SRV-L210-W3NX	Rocktab L210 Warranty Plus Support 3 years
SRV-L210-W5NX	Rocktab L210 Warranty Plus Support 5 years
SRV-U210-W3NX	Rocktab U210 Warranty Plus Support 3 years
SRV-U210P-W3NX	Rocktab U210 Pro Warranty Plus Support 3 years

Car power supply unit

12- 24 V IN/ 19 V Out



Order numbers

Item number	Description
ACC-RT-PWR4	Car power supply unit, 12-24 V IN

Compatibility

L210	U210	U210 Pro
•	•	

24 - 60 V DC on-board power supply unit

with 19 V output 5.5 mm round plug



- » Overvoltage protection
- » Overload protection
- » Overheating protection
- » Dust and waterproof according to IP67

Technical data

Typ	On-board power supply unit
Input voltage	24 – 60 V DC
Output voltage	19 V DC ($\pm 0,2$ V DC)
Dimensions	74 x 74 x 32 mm
Cable length	Inlet: 50 cm Exit: 150 cm

Compatibility

L210	U210	U210 Pro
•	•	

Order numbers

Item number	Description
ACC-GEN-PWR6	On-board power supply unit

Power supply unit



Order numbers

Item number	Description
ACC-RT-PWR5	Power supply unit for Rocktab U210 and Rocktab L210

Compatibility

L210	U210	U210 Pro
•	•	

USB C cable with Ethernet



Order numbers

Item number	Description
ACC-RT-USBCC	USB-C cable

Compatibility

L210	U210	U210 Pro
	•	•

Micro HDMI cable High Speed with Ethernet



- » Approx. 1 meter long
- » Available in three sizes

Technical data

Connections	19-pin HDMI - A plug, 19-pin micro HDMI - D plug
Resolutions	up to 4096 x 2160 pixels (4k x 2k)
Special features	Uses new extended color spaces for the presentation of digital photos

Compatibility

L210	U210	U210 Pro
•	•	

Order numbers

Item number	Description
ACC-GEN-CBL05	Micro HDMI cable high speed, 1 meters
ACC-GEN-CBL06	Micro HDMI cable high speed, 2 meters
ACC-GEN-CBL07	Micro HDMI cable high speed, 3 meters

USB-A to USB-C cable



- » Length approx. 50 cm

Technical data

Typ	USB-A to USB-C cable
Length	Ca. 50 cm

Order numbers

Item number	Description
ACC-RT-USBAC	USB-A to USB-C cable

Compatibility

L210	U210	U210 Pro
•	•	•